



The BIM effect

-WARNING -

Some objects seen in this Presentation may not
apply to California Hospitals

Frank Peters, Corp Construction Modeling Mgr



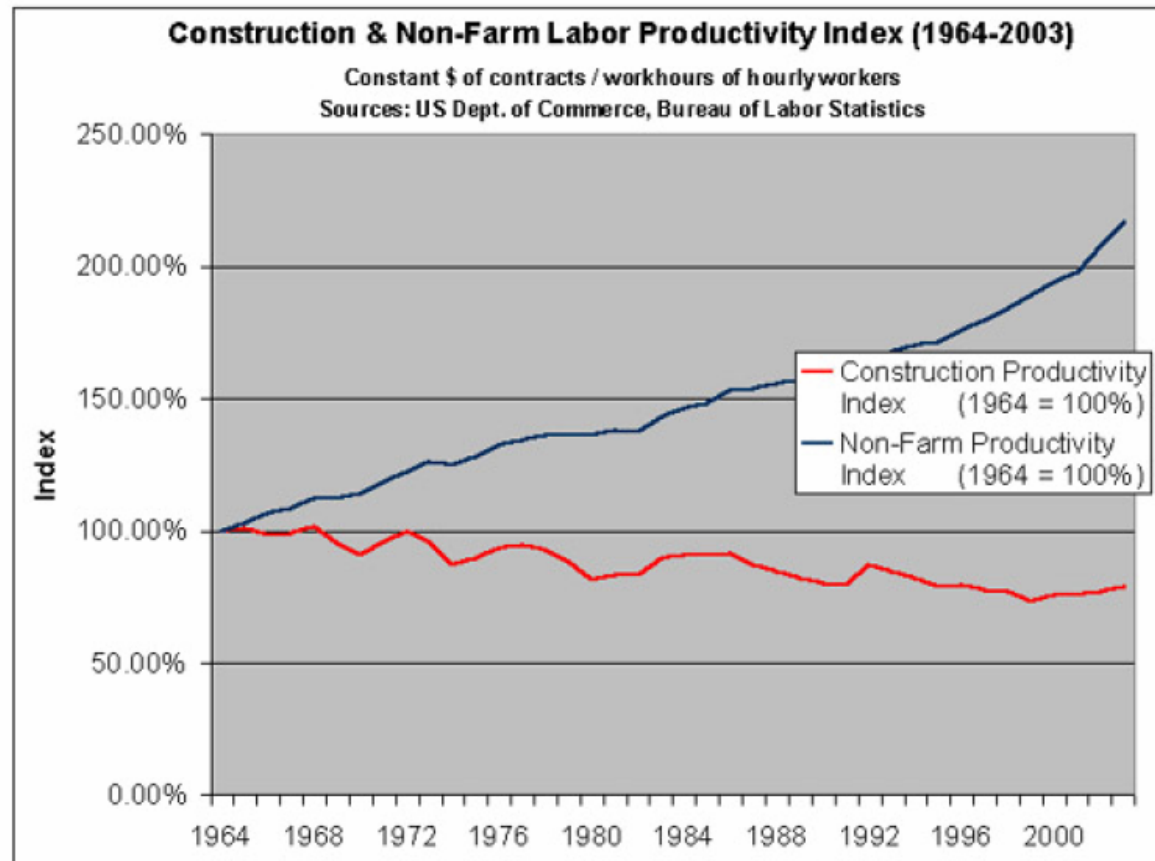
MCCARTHY

- Banner Gateway Medical Center
- 383,000 sq-ft, ~\$200+ Million
- 5-story, 171-bed tower
- 3 level Diagnostic and treatment





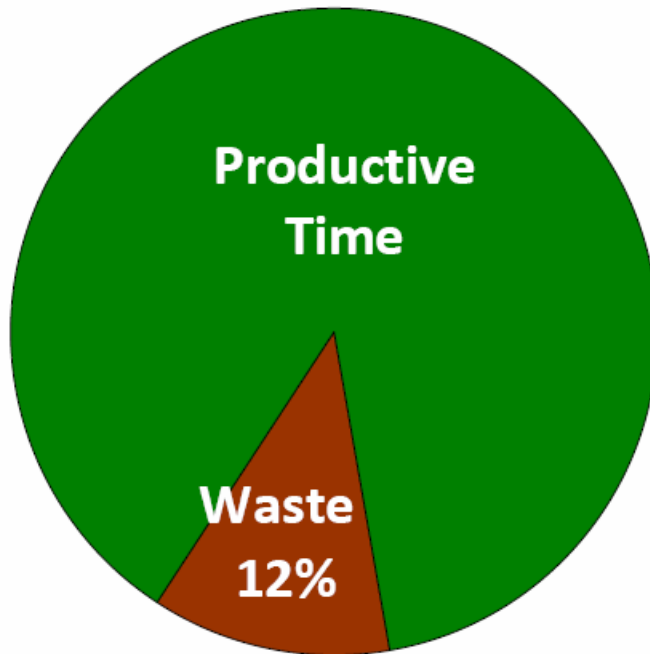
Traditional Delivery: Decreasing Productivity



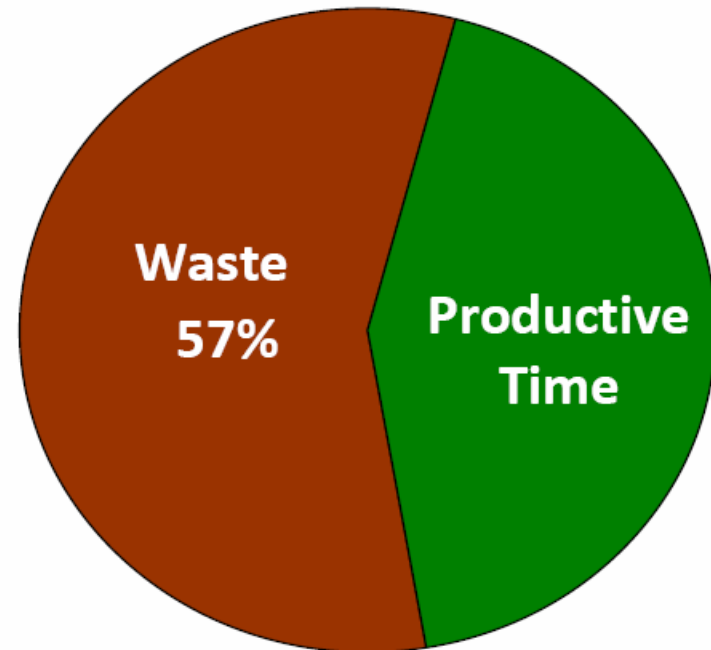


Traditional Delivery: Waste

Manufacturing

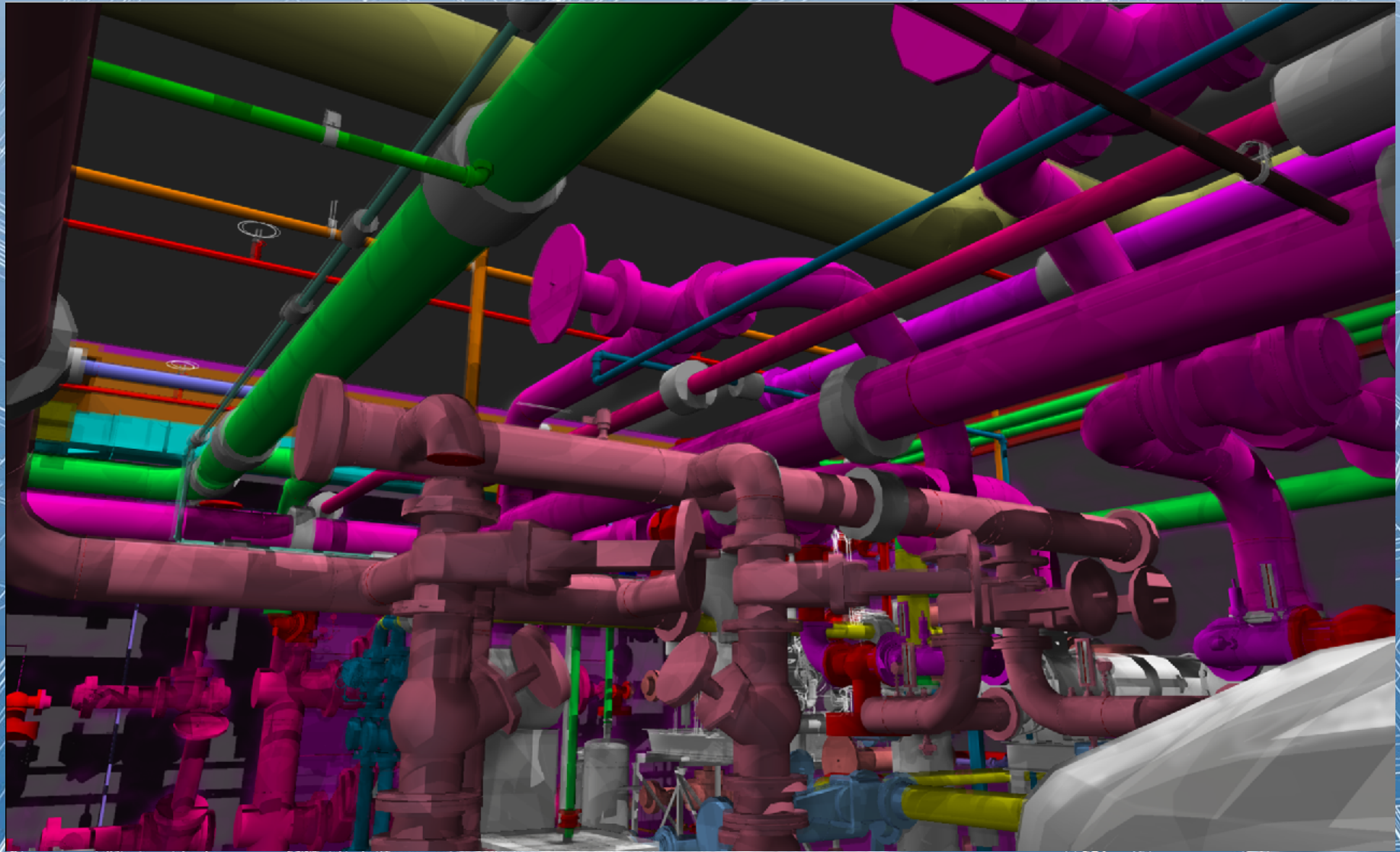


Construction



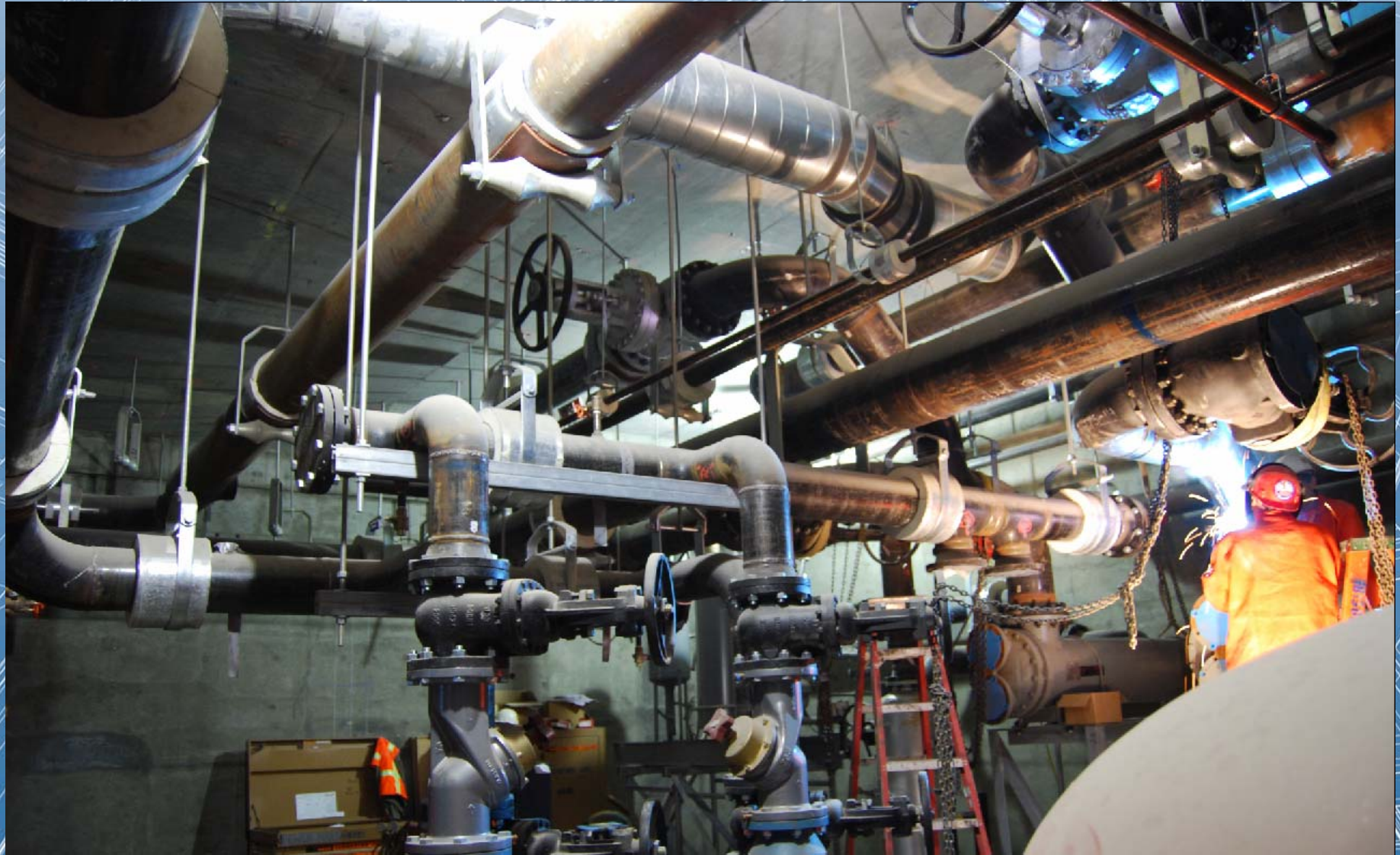


MCCARTHY





MCCARTHY



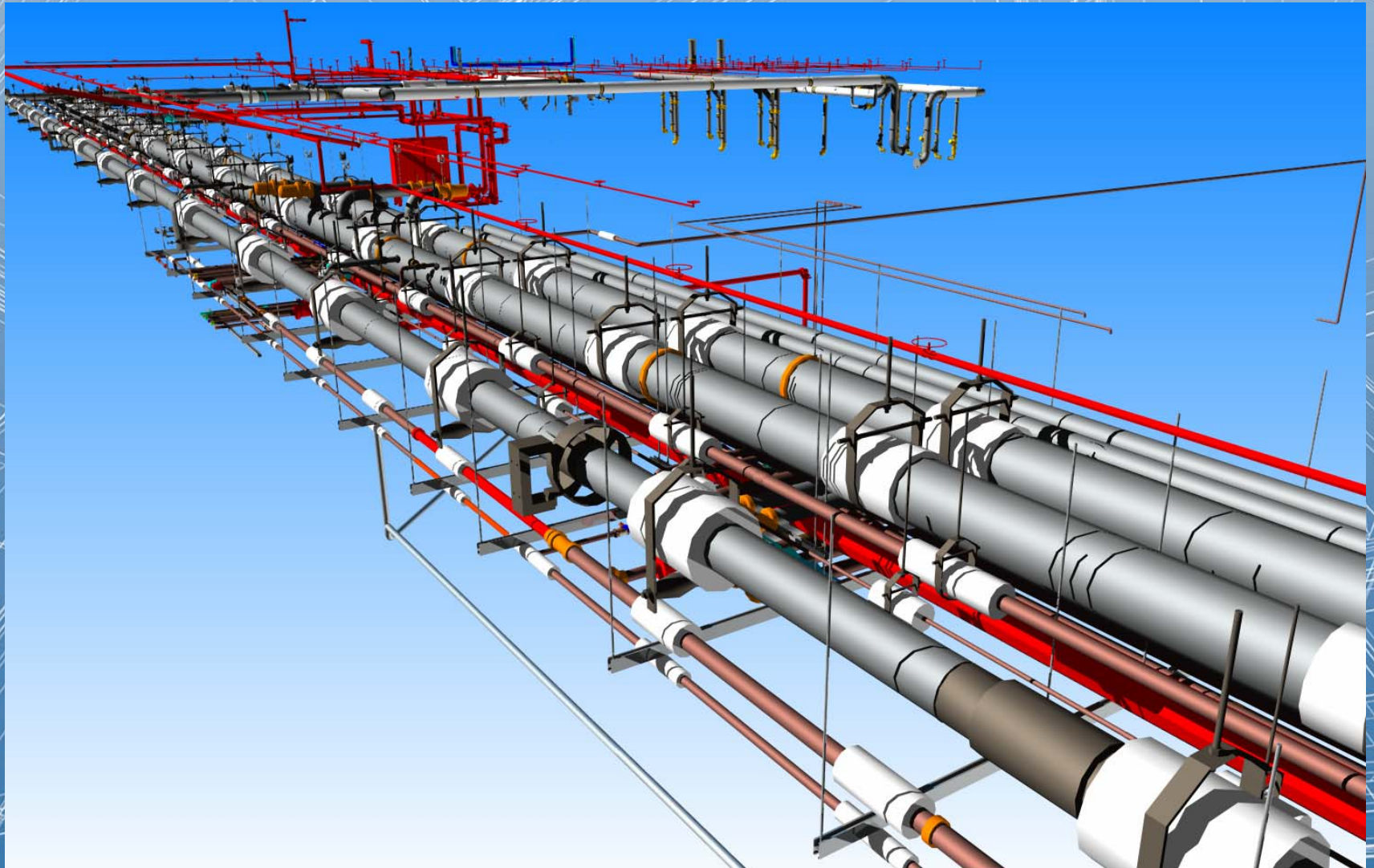


MCCARTHY





MCCARTHY





MCCARTHY





Benefits experienced

- 3D coordination = “field fix” avoidance.
- High level of predictability.
- Reduced number of RFI's and the time wasted waiting for answers.
- 15% time savings to schedule.
- Higher level of fabrication and installation Quality.



In Summary ...

- MEP 3D Coordination as Standard-Operating-Procedure
(how could we do it any other way?)
- *Design-for-Constructability* into Design Documents (bridge the means and methods divide).
- Need to get Coordinated models into a single BIM source (Design<->Shops Drawings)