

**A S I T E** <sup>TM</sup>  
Get to it

**buildingSMARTalliance Jan 2014 Challenge**  
**COBie Export**  
**COBie Configuration Guide**

## 1. About Asite

The Asite Cloud Platform contains a suite of integrated applications, which enable our users to meet the information-sharing requirements of the world's largest building projects. Our system enables full control of the information generated during the Building Lifecycle from conception through to occupation and beyond. This removes the requirement for investment in IT infrastructure and allows project teams to work seamlessly from anywhere on the planet with an internet connection.

## 2. About Adoddle Navigator

As part of our continued mission to support the AEC industry sector in sharing and coordinating information with their partners in a secure environment in the cloud, Adoddle Navigator is designed to integrate the BIM coordination process with sourcing, construction management, and procurement processes within one collaborative platform.

Adoddle Navigator supports export of COBie (Construction Operation Building Information Exchange) data at a project level as well as at a workset level (AEC Discipline wise data).

### Adoddle Navigator enables you to:

- ➔ Integrate directly with Autodesk™ Revit™
- ➔ Exchange data from 3D BIM Collaborative environment such as COBie (Construction Operation Building Information Exchange)
- ➔ Search various object, its revisions, association documents within all AEC discipline
- ➔ Associate plans, specs, and emails to the model in an open and extensible way
- ➔ Maintain a clear audit trail by tracking version control and updates to the files and models
- ➔ Selectively share your project model or individual BIM WorkSets with project partners
- ➔ Merge multiple model files and WorkSets from different project partners and different design tools into one central model
- ➔ View the differences between model file revisions
- ➔ Collaboratively review, interact and mark up model files in the integrated 3D viewer.
- ➔ Associate model views, component schedules (lists), and mark-ups with workflows and track actions across your team
- ➔ Tightly integrate your project document control and construction management system With your BIM coordination process
- ➔ Truly connect the commercial aspects of your project to the design itself.

### The benefits of Adoddle Navigator include:

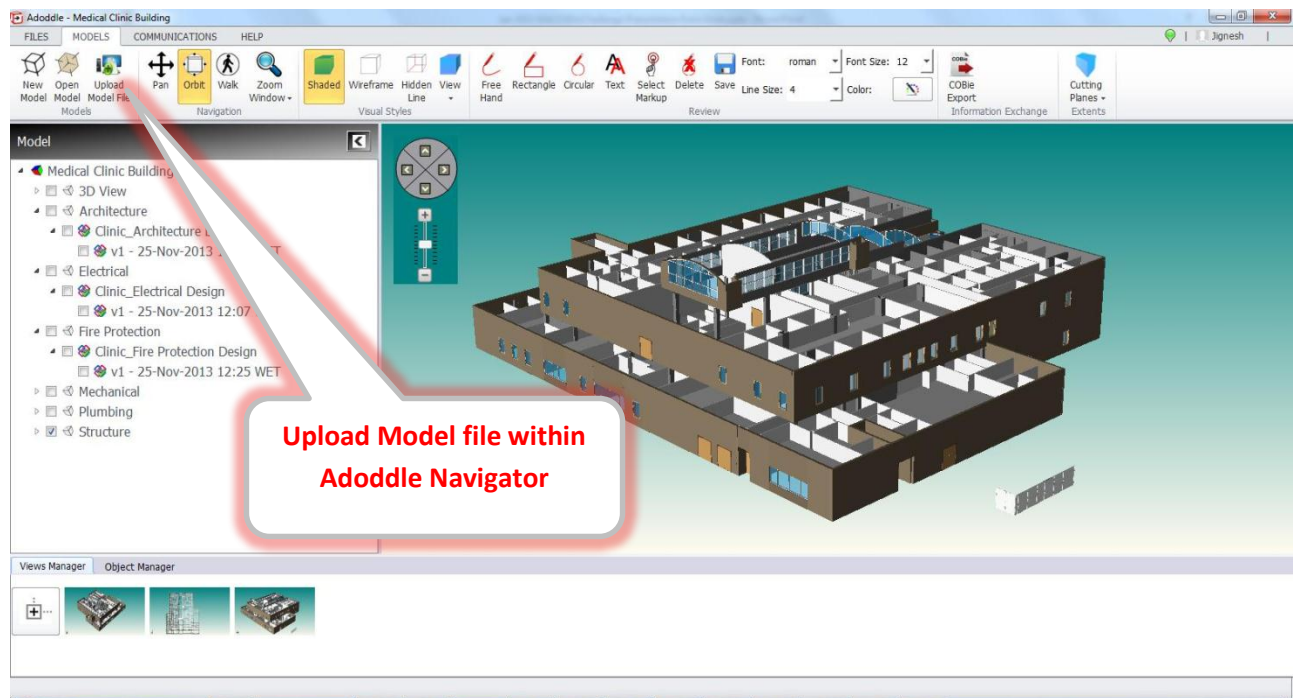
- ➔ Bring visibility and control to shared Building Information Models helping deliver the true potential of BIM and Integrated Project Delivery
- ➔ A truly interoperable and collaborative approach to modelling and model management makes it easier to work with distributed teams and disparate systems
- ➔ Eliminates errors from designing in isolation by viewing your design in the context of the overall model
- ➔ Reduces the risk of on-site problems with early clash detection – both of physical clashes and specification clashes
- ➔ Immediately review how the design has progressed during development and track critical decision making

- ➔ Centralise storage of all versions of your models in a collaborative online environment
- ➔ View and walk through the overall project model and access the rich data contained in the project model without expensive software.
- ➔ Stores and integrates model files from leading BIM design tools in the market

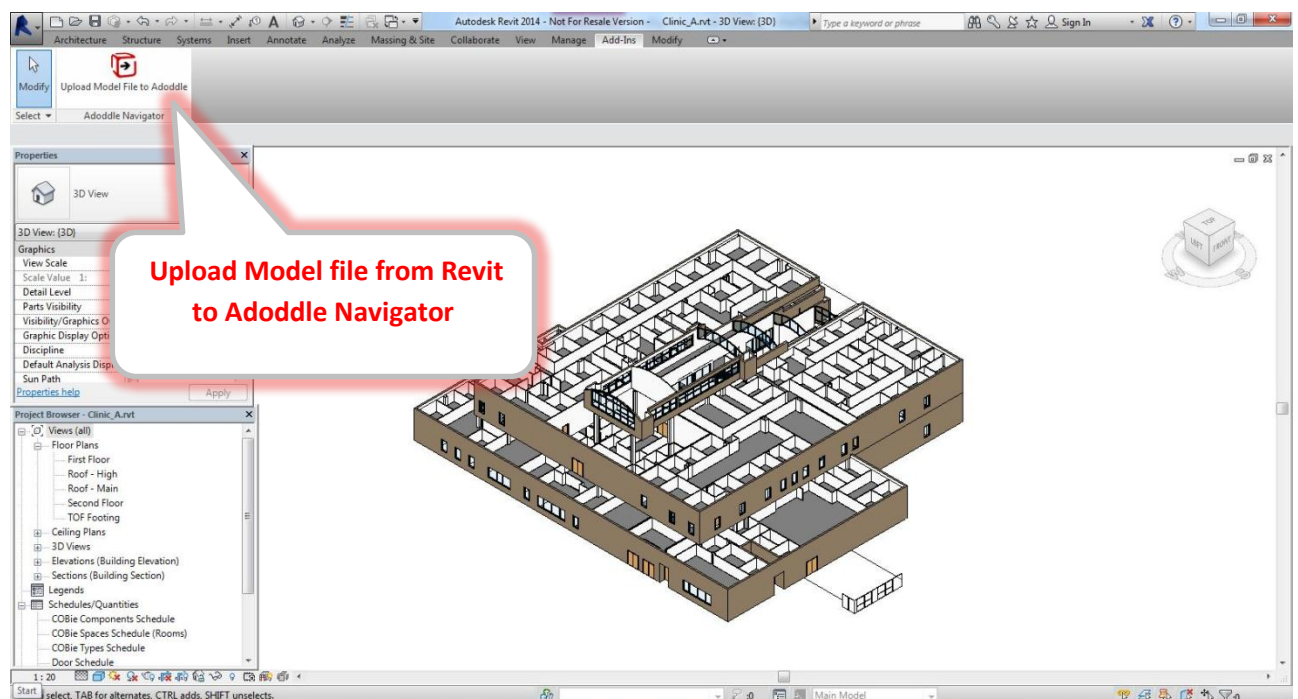
### 3. Upload a Model file

There are three different options available to upload a Model file into Adoddle Navigator:

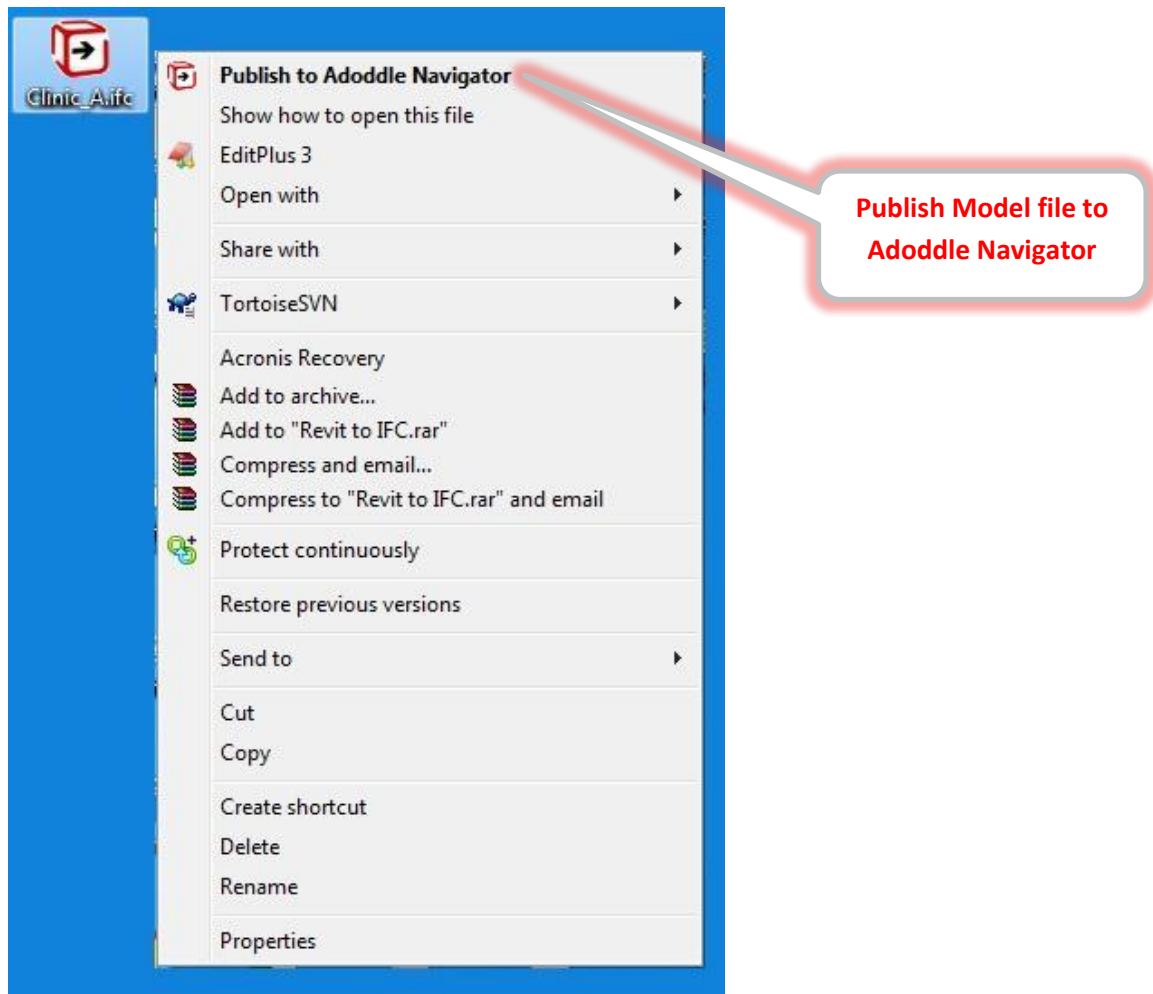
#### 1.1 Upload Model files from within Adoddle Navigator



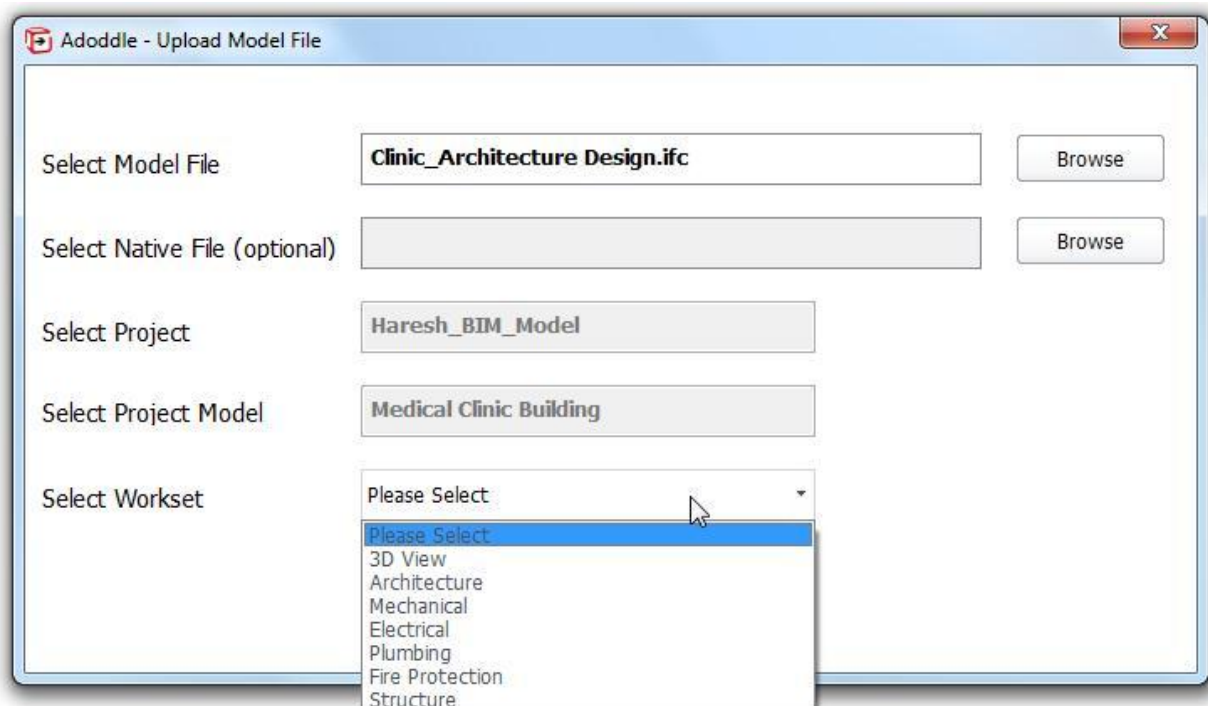
#### 1.2 Upload Model files from Revit by using the Adoddle Revit plugin



### 1.3 Publish Model files from Windows Explorer.



When user uploads a model file into Adoddle Navigator (by either ways), user is required to specify Model file, Project, Project Model and Workset.



## 2. Merging discipline wise BIM data in Adoddle Navigator

- ➔ Adoddle Navigator has facility to merge data at model level from different AEC discipline of BIM Models.
- ➔ To merge these data, Adoddle Navigator includes different worksets for each discipline.
- ➔ User would be able to generate this type of different discipline of worksets.
- ➔ Each workset includes its related discipline of model. Adoddle Navigator merges the data from all these worksets.
- ➔ These merged data can be used for various data exchange requirements.  
E.g. COBie

## 3. COBie Export:

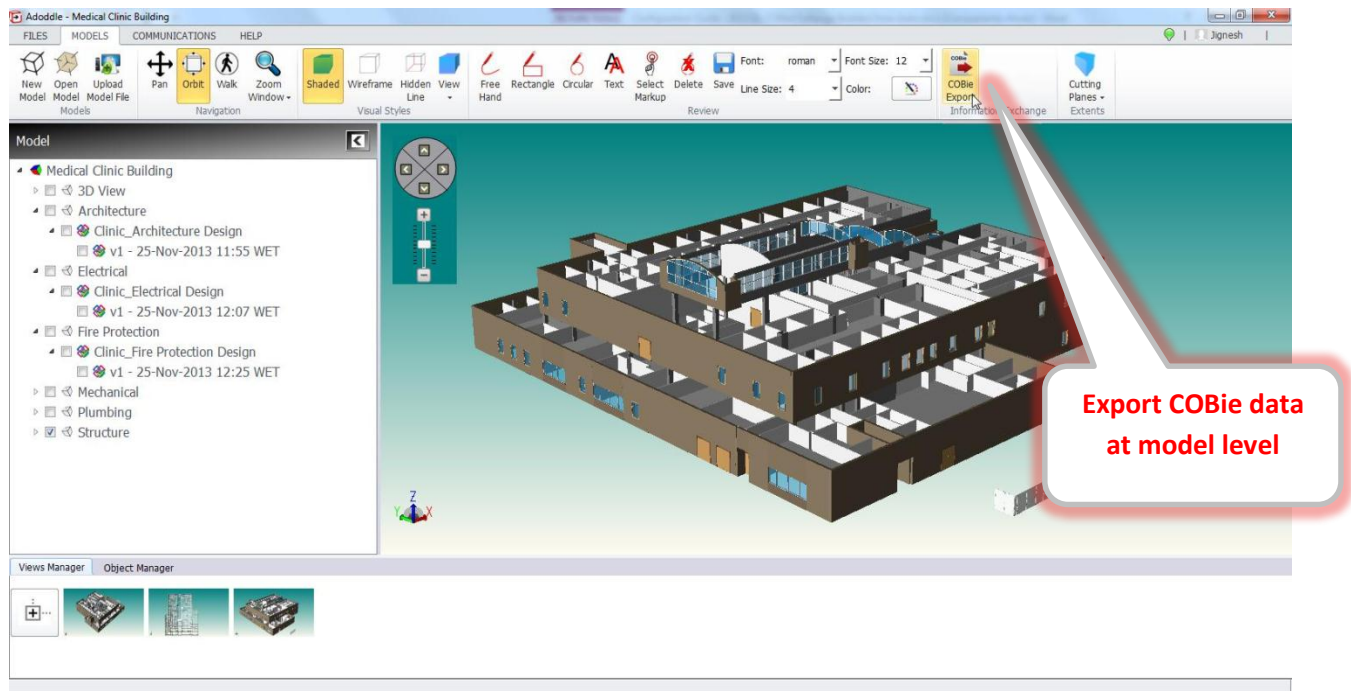
- ➔ Adoddle Navigator supports export of COBie Data for Construction Handover stage.
- ➔ Adoddle Navigator produces COBie data report in SpreadsheetXML format as below:

	A	B	C	D	E	F	G	H	I
	Name	CreatedBy	CreatedOn	Category	SpaceNames	ExtSystem	ExtObject	ExtIdentifier	Description
1	Dental	danielle.r.love@usace.army.mil	2011-09-14T17:02:58	Occupancy Zone	2A02	Unknown	IfcZone	1yTPx5m091Swg Sr43MTop	Dental Department
2	Dental	danielle.r.love@usace.army.mil	2011-09-14T17:02:58	Occupancy Zone	2A03	Unknown	IfcZone	1yTPx5m091Swg Sr43MTop	Dental Department
3	Dental	danielle.r.love@usace.army.mil	2011-09-14T17:02:58	Occupancy Zone	2A04	Unknown	IfcZone	1yTPx5m091Swg Sr43MTop	Dental Department
4	Dental	danielle.r.love@usace.army.mil	2011-09-14T17:02:58	Occupancy Zone	2A05	Unknown	IfcZone	1yTPx5m091Swg Sr43MTop	Dental Department
5	Dental	danielle.r.love@usace.army.mil	2011-09-14T17:02:58	Occupancy Zone	2A01	Unknown	IfcZone	1yTPx5m091Swg Sr43MTop	Dental Department
6	Dental	danielle.r.love@usace.army.mil	2011-09-14T17:02:58	Occupancy Zone	2B14	Unknown	IfcZone	2axQJmVcl6FvSRvxDVNU5t	Records Area
7	Records	danielle.r.love@usace.army.mil	2011-09-14T17:02:58	Occupancy Zone	2A06	Unknown	IfcZone	1yTPx5m091Swg Sr43MTop	Dental Department
8	Dental	danielle.r.love@usace.army.mil	2011-09-14T17:02:58	Occupancy Zone	2A07	Unknown	IfcZone	1yTPx5m091Swg Sr43MTop	Dental Department
9	Dental	danielle.r.love@usace.army.mil	2011-09-14T17:02:58	Occupancy Zone	2A08	Unknown	IfcZone	1yTPx5m091Swg Sr43MTop	Dental Department
10	Dental	danielle.r.love@usace.army.mil	2011-09-14T17:02:58	Occupancy Zone	2A09	Unknown	IfcZone	1yTPx5m091Swg Sr43MTop	Dental Department
11	Dental	danielle.r.love@usace.army.mil	2011-09-14T17:02:58	Occupancy Zone	2C09	Unknown	IfcZone	1yTPx5m091Swg Sr43MTop	Dental Department
12	Dental	danielle.r.love@usace.army.mil	2011-09-14T17:02:58	Occupancy Zone	2C08	Unknown	IfcZone	1yTPx5m091Swg Sr43MTop	Dental Department
13	Dental	danielle.r.love@usace.army.mil	2011-09-14T17:02:58	Occupancy Zone	2C04	Unknown	IfcZone	1yTPx5m091Swg Sr43MTop	Dental Department
14	Dental	danielle.r.love@usace.army.mil	2011-09-14T17:02:58	Occupancy Zone	2C07	Unknown	IfcZone	1yTPx5m091Swg Sr43MTop	Dental Department
15	Dental	danielle.r.love@usace.army.mil	2011-09-14T17:02:58	Occupancy Zone	2C06	Unknown	IfcZone	1yTPx5m091Swg Sr43MTop	Dental Department
16	Dental	danielle.r.love@usace.army.mil	2011-09-14T17:02:58	Occupancy Zone	2C01	Unknown	IfcZone	1yTPx5m091Swg Sr43MTop	Dental Department
17	Dental	danielle.r.love@usace.army.mil	2011-09-14T17:02:58	Occupancy Zone	2C03	Unknown	IfcZone	1yTPx5m091Swg Sr43MTop	Dental Department
18	Dental	danielle.r.love@usace.army.mil	2011-09-14T17:02:58	Occupancy Zone	2C02	Unknown	IfcZone	1yTPx5m091Swg Sr43MTop	Dental Department
19	Pediatrics	danielle.r.love@usace.army.mil	2011-09-14T17:02:58	Occupancy Zone	1E12	Unknown	IfcZone	3jI7LQmInDvx8CYfsc0KzI	Pediatric Departments
20	Pediatrics	danielle.r.love@usace.army.mil	2011-09-14T17:02:58	Occupancy Zone	1E11	Unknown	IfcZone	3jI7LQmInDvx8CYfsc0KzI	Pediatric Departments
21	Dental	danielle.r.love@usace.army.mil	2011-09-14T17:02:58	Occupancy Zone	2A13	Unknown	IfcZone	1yTPx5m091Swg Sr43MTop	Dental Department
22	Dental	danielle.r.love@usace.army.mil	2011-09-14T17:02:58	Occupancy Zone	2A14	Unknown	IfcZone	1yTPx5m091Swg Sr43MTop	Dental Department
23	Circulation	danielle.r.love@usace.army.mil	2011-09-14T17:02:58	Occupancy Zone	2A15	Unknown	IfcZone	1yTPx5m091Swg Sr43MTop	Dental Department
24	Dental	danielle.r.love@usace.army.mil	2011-09-14T17:02:58	Occupancy Zone	2A11	Unknown	IfcZone	1yTPx5m091Swg Sr43MTop	Dental Department
25	Circulation	danielle.r.love@usace.army.mil	2011-09-14T17:02:58	Occupancy Zone	2A13	Unknown	IfcZone	1yTPx5m091Swg Sr43MTop	Dental Department
26	Dental	danielle.r.love@usace.army.mil	2011-09-14T17:02:58	Occupancy Zone	2A13	Unknown	IfcZone	1yTPx5m091Swg Sr43MTop	Dental Department
27	Dental	danielle.r.love@usace.army.mil	2011-09-14T17:02:58	Occupancy Zone	2A13	Unknown	IfcZone	1yTPx5m091Swg Sr43MTop	Dental Department

### 3.1 Model Level COBie Export :

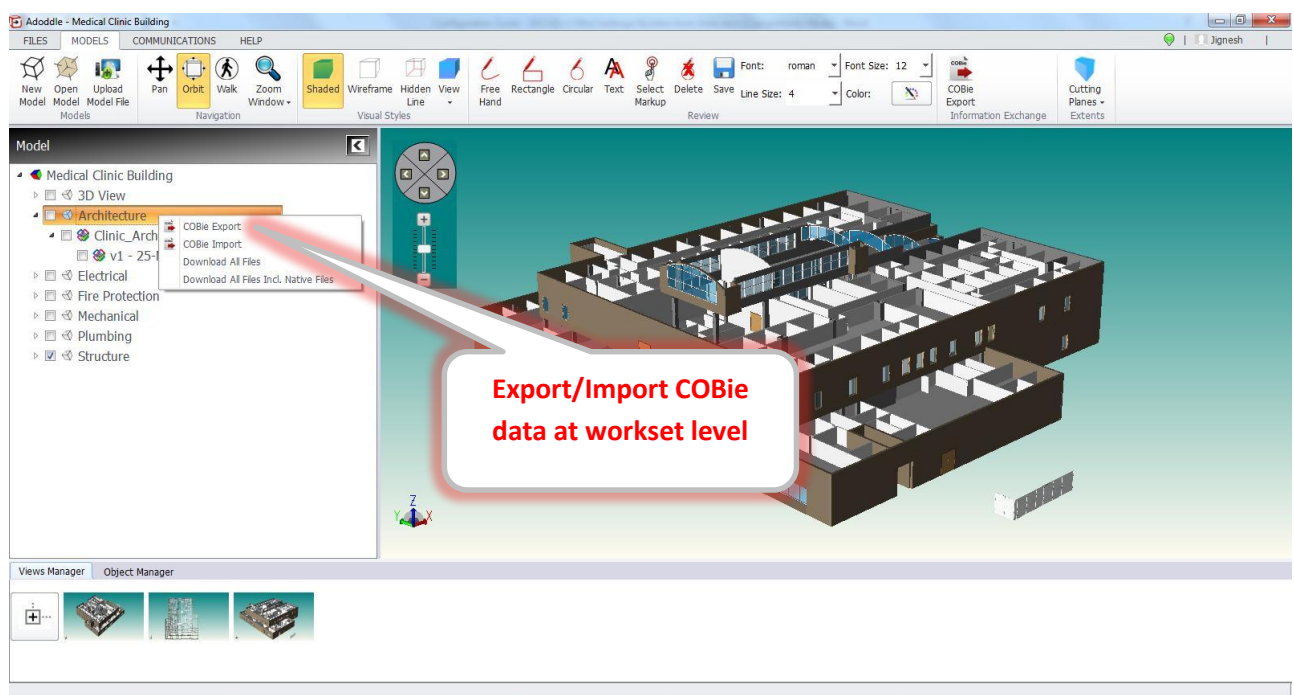
- ➔ Merge the data from different AEC disciplines of BIM model and produce a COBie report in SpreadsheetXML format for whole project model.
- ➔ This would require generating COBie report at Model level including the entire objects available in all the discipline of files.
- ➔ The tab, 'COBie Export' (available in Model Ribbon, as shown in below image), is providing COBie data export for Construction Handover stage at Project Model level.
- ➔ While using this option for COBie export, Adoddle Navigator uses [Merging Matrix](#) provided by buildingSMART alliance during COBie challenge 2013.





### 3.2 Workset level COBie Export :

- ➔ Produce COBie data report for any discipline of workset in SpreadsheetXML format, update the data and re-import the data in same discipline of workset to update the model level COBie report.
- ➔ A Right Click option(s) called 'COBie Export' and 'COBie Import' are provided to export/Import the COBie data at workset level which are used to update the data by different AEC consultants/contractor/subcontractor/manufacturer/supplier/owner etc. to update the COBie model level report from Construction Document stage to Construction Handover stage.



## 4. Contact Us

Whilst Asite's solutions are easy to use, we believe in providing the very best in on-going support to ensure you gain maximum benefit from the technology. You can speak with an Asite support representative 24 hours a day, 7 days a week, 365 days per year via email [support@asite.com](mailto:support@asite.com) or by telephone on:

UK:	+44 (0)845 130 5550
US/Canada:	+1 855-ASITE-HELP (855-274-8343)
Australia:	+61 1800 661 752
India:	+91 (0)79 4021 1900

Visit our page - <http://www.asite.com/contactus>

---