

Eagle Technology, Inc. Proteus MMX

Harry Kohal, VP Business Development



product description

Proteus MMX is a web-based, multi-enterprise solution for asset life-cycle management. Hosting a top level down architecture, the major functions are separated into modules for ease of use and understanding; yet integrated to provide maximum utilization and optimization. Proteus MMX integrates asset management, maintenance management, inventory, labor and purchasing functions for improved scheduling, cost reduction, resource planning and more.

product features

- Web-based - no software to install!
- World wide access
- Customizable & robust
- Automated work order generation
- Automatically print, email, or send work orders to a mobile device
- Multi-location management
- Multi-cycle scheduling
- Powerful report generator with over 120 reports and graphs
- Multiple languages and currencies
- Integrate with BMS/BAS systems
- View drawings, videos, user manuals, maintenance instructions, etc.
- Fixed or mobile asset tracking with RFID
- Many more options to choose from

user base

users

user count:	100 users
facility count:	50 facilities
public sector:	30% (Airports, Universities, etc.)
private sector:	70% (Manufacturing, Office Buildings, etc.)

customers

name:	Woodbine Entertainment Group
name:	Ottawa Airport
name:	Princess Noura University (Saudi Arabia)

tested product

product name: Proteus MMX

product version: 2.1

PC or Cloud: PC / Cloud

website: <http://www.eaglecmms.com>

challenge scope

information	COBie.Sheet	Imported
spaces and equipment	Space, Type, Component	<input checked="" type="checkbox"/>
PM schedules	Job	<input checked="" type="checkbox"/>
safety procedures	Job	<input checked="" type="checkbox"/>
systems	System	<input checked="" type="checkbox"/>
system procedures	Job	<input checked="" type="checkbox"/>
materials, tools, training	Resource	<input checked="" type="checkbox"/>
associated documents	Document	<input type="checkbox"/>
replacement parts	Spare	<input checked="" type="checkbox"/>
space and equipment properties	Attribute	<input type="checkbox"/>
space zones	Zone	<input type="checkbox"/>

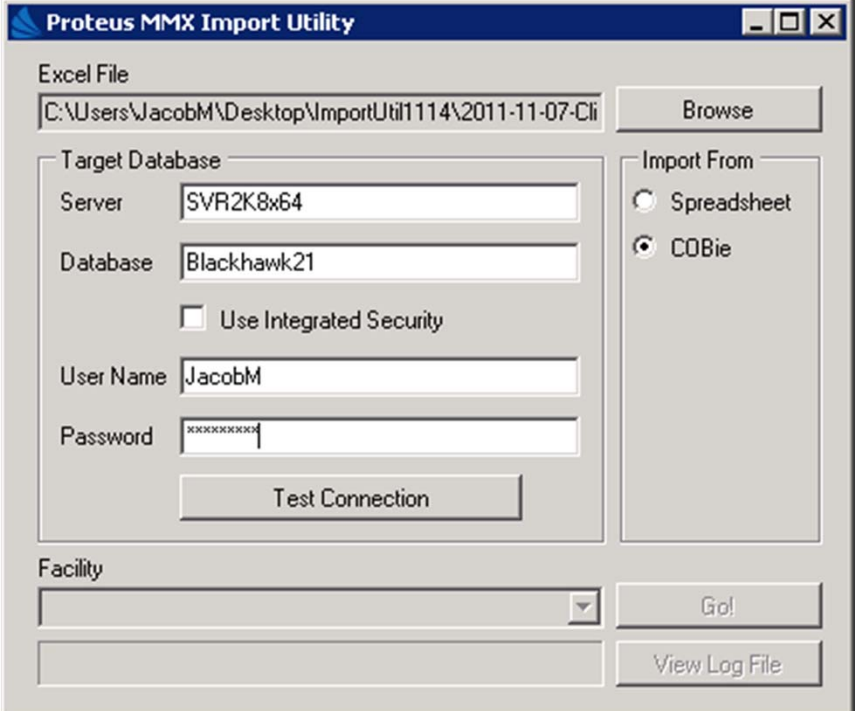
configuration

As a consumer of the COBie Standard, Eagle Technology, Inc. (Eagle) provides a capability to import COBie data into a SQL database accessed by Eagle's maintenance/asset management solution, *Proteus MMX*.

Prerequisites:

- New/Blank/Empty *Proteus MMX* database
- COBie XML/XLS document
- *Proteus MMX* installation

It should be noted the import tool is designed to be utilized in conjunction with a new database, the initial step in the CMMS implementation process. *Proteus MMX* must be installed and configured. The COBie XML document should be saved as a Microsoft Excel document (2003 or 2007). The COBie Conversion Tool will retrieve the data and populate the *Proteus MMX* database.



The screenshot shows the 'Proteus MMX Import Utility' dialog box. It has a title bar with the text 'Proteus MMX Import Utility' and standard window controls. The main area is divided into several sections:

- Excel File:** A text box containing the path 'C:\Users\JacobM\Desktop\ImportUtil1114\2011-11-07-Cli' and a 'Browse' button to its right.
- Target Database:** A group box containing:
 - 'Server' text box with 'SVR2K8x64'
 - 'Database' text box with 'Blackhawk21'
 - 'Use Integrated Security' checkbox (unchecked)
 - 'User Name' text box with 'JacobM'
 - 'Password' text box with 'xxxxxxxxxx'
 - 'Test Connection' button
- Import From:** A group box containing two radio buttons:
 - 'Spreadsheet' (unchecked)
 - 'COBie' (checked)
- Facility:** A dropdown menu (empty) and a 'Go!' button to its right.
- At the bottom right, there is a 'View Log File' button.

process

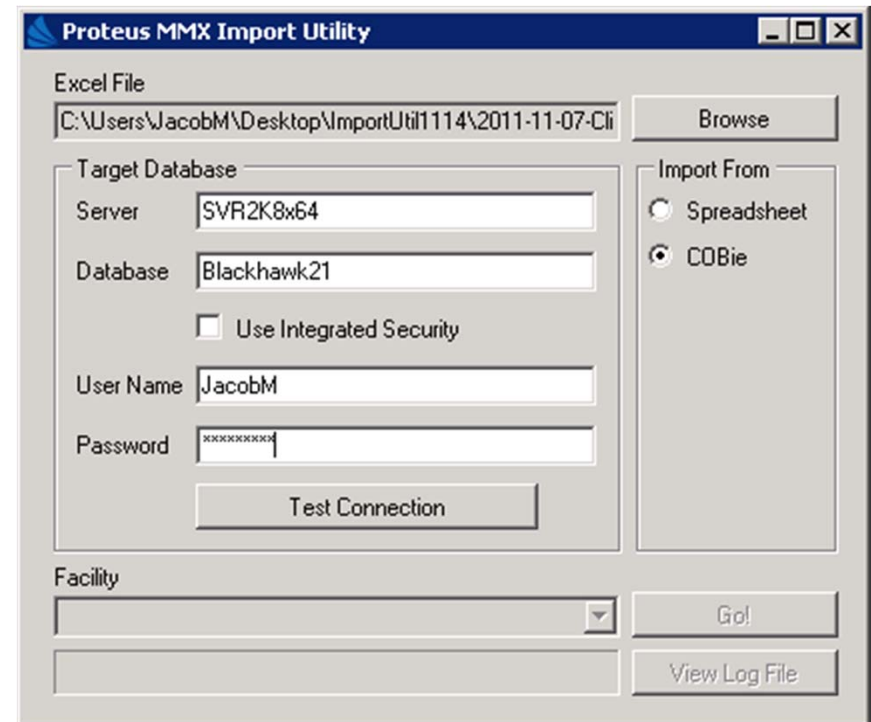
The process of COBie consumption is quite simple.

Prerequisites:

- New/Blank/Empty *Proteus MMX* database
- COBie XLS document
- Proteus MMX* installation

Once the above items have been gathered, a Technical Support Specialist from Eagle Technology will utilize the *Proteus MMX Import Utility* to import the data in the system.

The import time for the sample Clinic XLS document is approximately **three (3) minutes**.



COBie savings – single project

Eagle Technology does not currently have any applications of COBie consumption in the current market. Eagle has associations with several clients and firms that plan on implementing in the near future

back of napkin estimate of:

- Savings to load data - \$30,000
- savings per PM - \$50
- savings per service order - \$50

- Total \$ FM office savings - \$75,000 - \$100,000

contacts

COBie support

name: Matthew Wagner
phone: (262) 241-3845
email: MatthewW@eaglecmms.com
web: <http://www.eaglecmms.com>

marketing POC

name: Jennifer Bublitz
phone: (262) 241-3845
email: JenniferB@eaglecmms.com