



**BUILDING
INNOVATION 2019**

National Institute of
BUILDING SCIENCES

CONFERENCE & EXPO

The Vision of Better Information Management



**BUILDING
INNOVATION** 2019

National Institute of
BUILDING SCIENCES

CONFERENCE & EXPO

WELCOME



BUILDING
INNOVATION 2019

National Institute of
BUILDING SCIENCES
CONFERENCE & EXPO

Introduction to WMATA (METRO)

- Created in 1967 by the Interstate Compact; began rail operations 1976
- Multi-jurisdictional - DC, MD, VA, US
- Service area ~ 1,500 square miles
- Rail, Bus and Paratransit modes
- Approximately 1,000,000 trips daily



BUILDING
INNOVATION 2019

National Institute of
BUILDING SCIENCES
CONFERENCE & EXPO

Introduction to WMATA (METRO)

- Over \$40 billion in assets (excluding land)
 - Over 400,000 identified assets
 - Nearly 10,000 employees
 - 291 miles of track
 - 1,824 buses
 - 1,236 rail cars
 - 618 escalators
 - 318 elevators



BUILDING
INNOVATION 2019

National Institute of
BUILDING SCIENCES
CONFERENCE & EXPO

WMATA (METRO) Context

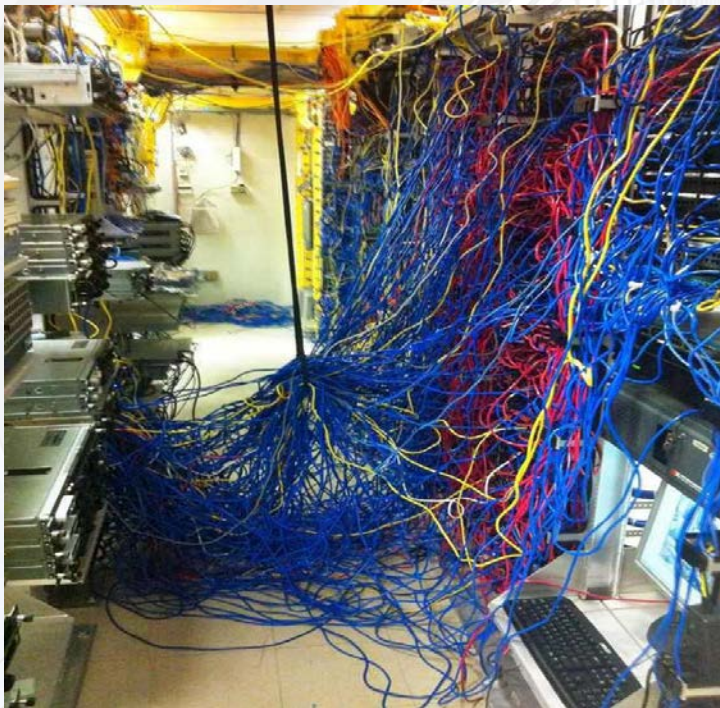
- Dedicated Capital Funding – 1st time ever
- \$25 billion need estimated for SGR and new service requests
- \$1.5 billion in capital expenditures per year
- Over 600 projects submitted for program funding
- Safety and Compliance drivers

"Without Data You're Just Another Person With An Opinion"

W. Edwards Deming



Information Management?





**BUILDING
INNOVATION** 2019

National Institute of
BUILDING SCIENCES

CONFERENCE & EXPO

Historical Processes Perspective



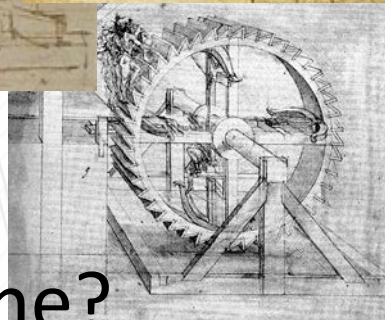
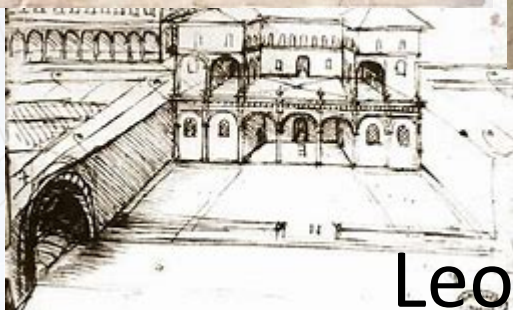
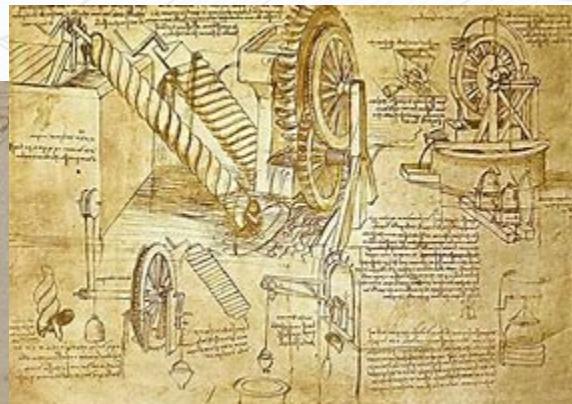
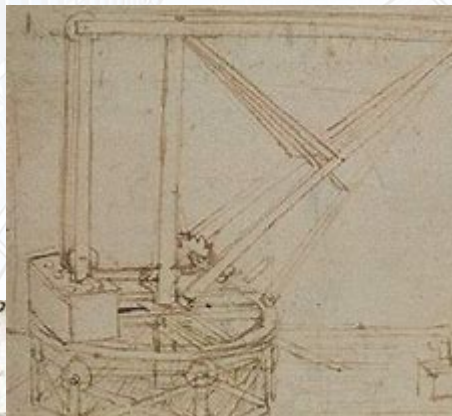
Do or Die



**BUILDING
INNOVATION** 2019

National Institute of
BUILDING SCIENCES
CONFERENCE & EXPO

TIME FOR A RENAISSANCE?



Leonardo, anyone?

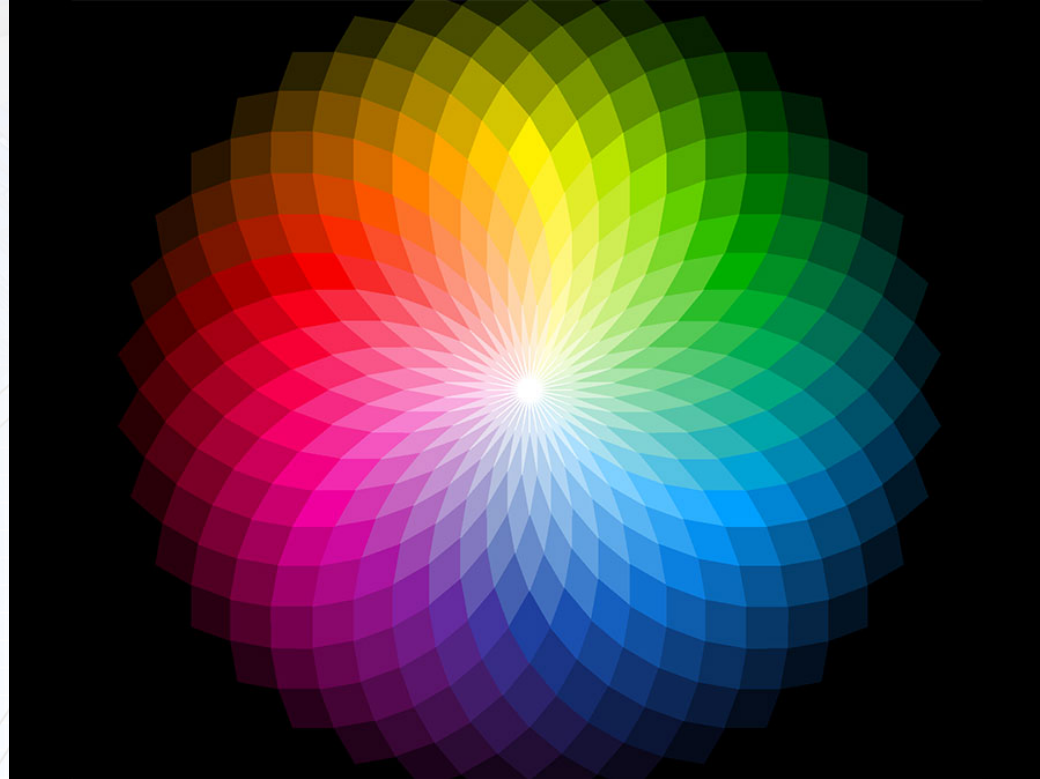


BUILDING
INNOVATION 2019

National Institute of
BUILDING SCIENCES

CONFERENCE & EXPO

INFORMATION OVERLOAD?





**BUILDING
INNOVATION** 2019

National Institute of
BUILDING SCIENCES

CONFERENCE & EXPO

INFORMATION SINGULARITY?



1984 (not the novel...)



BUILDING
INNOVATION 2019

National Institute of
BUILDING SCIENCES

CONFERENCE & EXPO

STANDARD PROCESS FLOW

CONCEPT/NEED
PROGRAMMING
PRELIM DESIGN
DESIGN DEVELOPMENT
CONSTRUCTION DOCUMENTS
CLOSEOUT
OPERATION/MAINTENANCE
DECOMMISSION

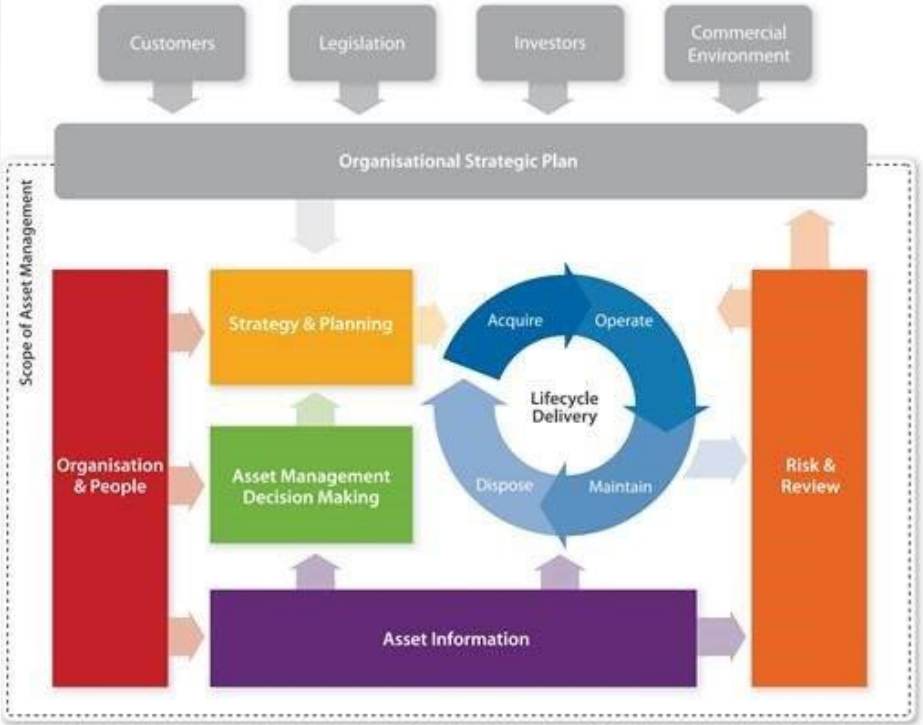


**BUILDING
INNOVATION** 2019

National Institute of
BUILDING SCIENCES

CONFERENCE & EXPO

BETTER INFORMATION EXAMPLE





BUILDING
INNOVATION 2019

National Institute of
BUILDING SCIENCES

CONFERENCE & EXPO

Current Information Rich Processes

- Enterprise Asset Management (EAM)
- Building Information Modeling (BIM)
- Geospatial Information System (GIS)
- Enterprise Resource Planning (ERP)
- Business Performance Management (BPM)
- Life-cycle Cost Analysis (LCA)
- Total Cost of Ownership (TCO)
- Business Suite Applications
- ... and?

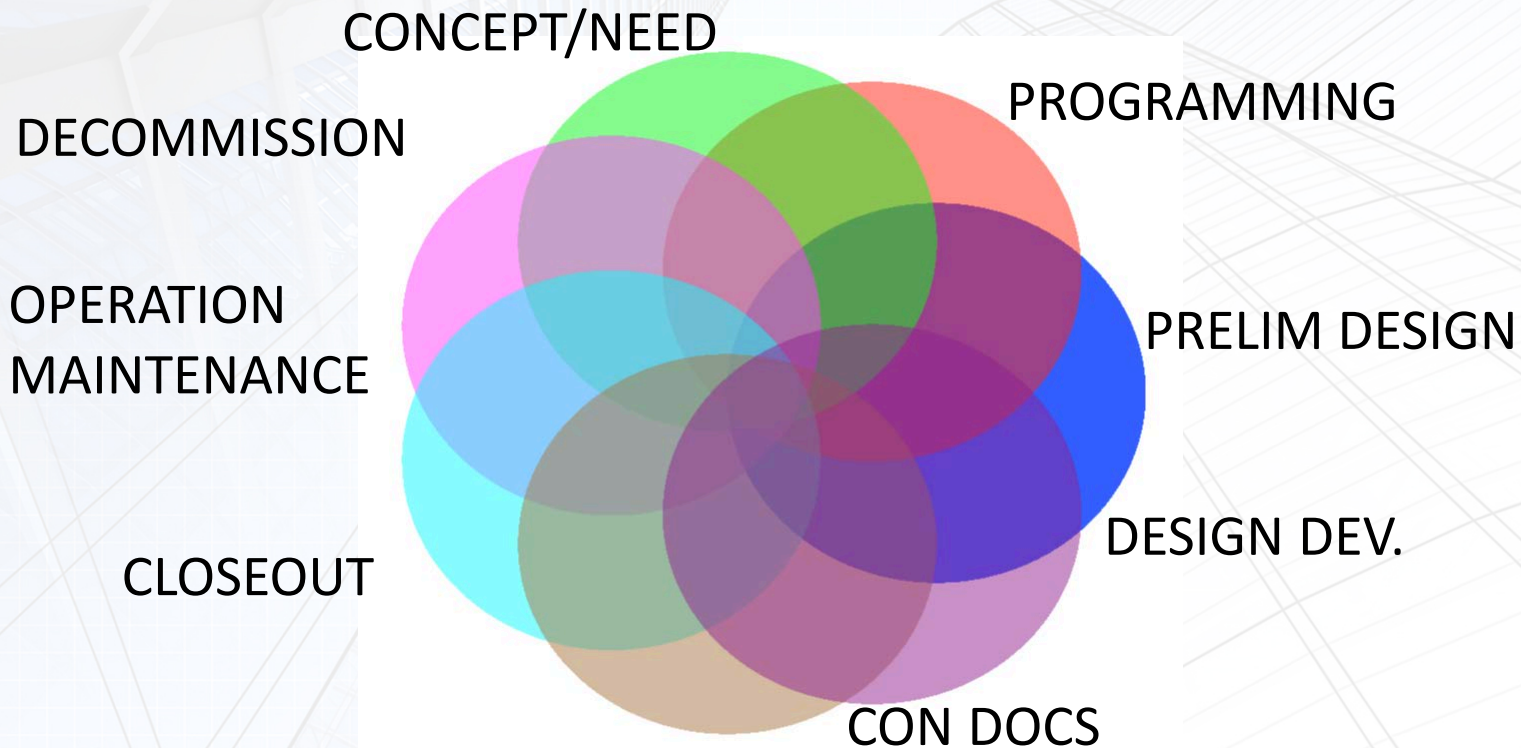


**BUILDING
INNOVATION** 2019

National Institute of
BUILDING SCIENCES

CONFERENCE & EXPO

VISIONARY PROCESS FLOW





BUILDING
INNOVATION 2019

National Institute of
BUILDING SCIENCES

CONFERENCE & EXPO

INFORMATION & EXCHANGES

- Building Information Modeling (BIM)
- Geospatial Information System (GIS)
- COBie
- LiDAR
- CMMS
- AMS
- Business Suite Applications
- ... and?



**BUILDING
INNOVATION 2019**

National Institute of
BUILDING SCIENCES

CONFERENCE & EXPO

IT'S THE PEOPLE NOT THE TECHNOLOGY

- Questions?